

THE COOPER CHRONICLES

MARCH 2024
Q2



INSIDE THIS ISSUE

DECEMBER 2023- FEBRUARY 2024



PROJECT PROGRESS:

Putting the focus on our current work and where you can find us.



INDUSTRY UPDATES:

Sharing updates on pricing and availability in the industry over the past couple of months.



DEPARTMENT HIGHLIGHT:

Focusing on our Self-Perform Group and their impact across the company.



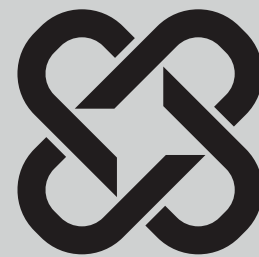
COMMUNITY INVOLVEMENT:

Highlighting recent company events and our impact in the community.



SAFETY SPOTLIGHT:

Employee accomplishments & important information to keep you in the know.



COOPER STEEL®

PROJECT PROGRESS



INDUSTRY UPDATES

STEEL MARKETS

18

STATES

55

CITIES



WHERE YOU CAN FIND US

SUPPLY & DEMAND

Supply is good on most products/sizes, but some member sizes run low or out of stock in between rolling cycles. This is due to demand for heavier member sizes. This could create a week or two gap in availability, but our purchasing department does a great job managing this and always keeps this in mind, especially on heavy materials.

MILL CAPACITY

Capacities are still strong and are running at a 70% to 80% range. Rolling cycles are back to 4-8 weeks, depending on the section size.
Note that Spring shutdowns will take place in April.

INDUSTRY UPDATES

The backlog for comparable-size fabricators across the country is strong. Most are reporting a good backlog into 2025. We are also set to be released and are chasing projects that will provide us with a backlog into 2025.

PROJECT HIGHLIGHT

MISSION CRITICAL

We continue to see incredible growth in our mission-critical market, which is a testament to the collaboration, hard work, and determination in every department within Cooper Steel.

My role focuses on sharpening our processes to provide the best product possible for our clients, no matter the challenge. Each project presents unique obstacles from schedule to site, however, seeing similar challenges from multiple mission-critical projects allows us to be proactive in our approach. We continue to face each project head-on to provide top-tier customer service throughout every step of the process.



ZACH HOOD
SR. PROJECT MANAGER,
MISSION CRITICAL



78

TOTAL DATA CENTER PROJECTS

77K

TOTAL FABRICATED TONS ON DATA CENTERS

08

GENERAL CONTRACTOR PARTNERSHIPS



SELF-PERFORM GROUP

Our Cooper team operates as a one-stop shop, working together to provide a solution that services customers from fabrication to on-site management and erection crews.



TOMMY HICKS
EVP, SELF-PERFORM GROUP

“
Our Self-Perform Group knows that our combined teamwork equals our success. We work together each day with one goal in mind: to exceed our customers' expectations.
”

37

TOTAL EMPLOYEES

150

COMBINED YEARS AT COOPER STEEL



DAMON SMITH
SELF-PERFORM GROUP,
PROJECT MANAGER
13 YEARS AT COOPER STEEL



JESS MARQUEZ
SELF-PERFORM GROUP,
GENERAL SUPERINTENDENT
7 YEARS AT COOPER STEEL



CARMACK RIGSBY
SELF-PERFORM GROUP,
ASST. PROJECT MANAGER
7 YEARS AT COOPER STEEL



CHRIS HADDEN
SELF-PERFORM GROUP,
GENERAL SUPERINTENDENT
2 YEARS AT COOPER STEEL



JADE GOINS
SELF-PERFORM GROUP,
PROJECT COORDINATOR
1 YEAR AT COOPER STEEL

15

IRONWORKERS

04

EQUIPMENT OPERATORS

04

GENERAL FOREMAN

02

CRANE OPERATORS

02

QUALITY CONTROL INSPECTORS

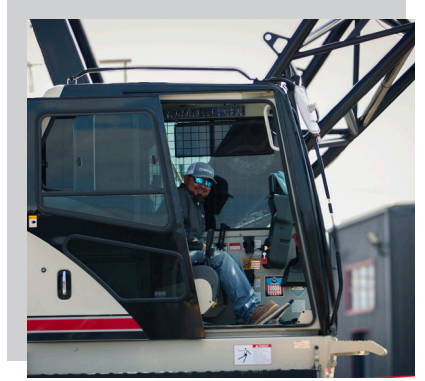
02

FOREMAN

WHERE IS OUR SELF-PERFORM TEAM?

26
CITIES

11
STATES



TEAM CERTIFICATIONS

One of our General Superintendents, Jess Marquez, recently received his crane certifications for Lattice Boom Cranes (LAT), Service Truck Cranes (STC), Telescopic Boom Cranes- Swing Cab (TLL), and Telescopic Boom Cranes- Fixed Cab (TSS).

Additionally, both Jess and Carmack Riggsby completed 3D Lift Training, further advancing their crane skills and capabilities.

14

TOTAL OSHA-30 CERTIFIED TEAM MEMBERS

22
CERTIFIED FORKLIFT OPERATORS

14

TOTAL OSHA-10 CERTIFIED TEAM MEMBERS

32
TOTAL JOBS MANAGED
2023 FISCAL YEAR

PEDDINGHAUS PEDDIBOT PHASE 2

Our self-perform team has been diligently working to erect the latest addition to our Shelbyville campus: the Peddinghaus PeddiBot Facility. This 17,600-square-foot facility is critical to further streamlining our fabrication process. The self-perform group's consistent and dedicated attitudes result in a quality final product.



COOPER CORNER

STAY IN THE KNOW

A TIME TO REFLECT

PROJECT TOPPING OUT CEREMONY

Our field team celebrated the topping out ceremony for this 8,565-ton project in White, GA. This project highlighted our team's impressive ability to adapt when needed and showcased our detailed scheduling capabilities.



Our team celebrated the topping out of a successful team project in Atlanta, Georgia! This project was 1,218 tons and consisted of 6 trusses at 110 feet, roughly weighing 130,000 pounds each. The fabrication of these trusses is a testament to the precision and grit in our shop.

PROJECT TOPPING OUT CEREMONY



5S SAFETY SYSTEM

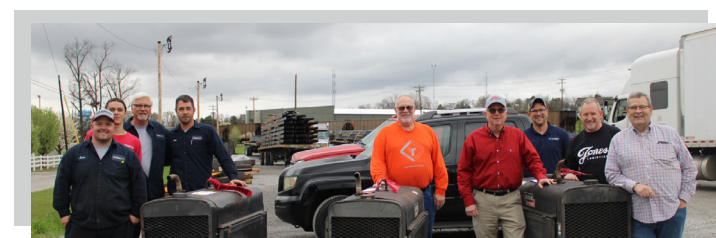
Cooper Steel has implemented a 5S system, allowing our team to work efficiently, effectively, and safely. This system has provided a consistent approach to organization in the shop, making it easier for employees to do their jobs without wasting time or risking injury.



COMMUNITY INVOLVEMENT:

First Baptist Church Donations

It is rewarding to partner with an organization that is making an impact across the globe. We had the unique opportunity to donate welding machines to the First Baptist Church in Shelbyville for the church's upcoming mission trip to the Dominican Republic, where the machines will be donated to a local ministry.



Christmas Giving

BLUE MONARCH

Cooper Steel employees collected donations for Blue Monarch, a remarkable program that provides a safe space for women and their children as they recover, work to break adverse cycles and rebuild their families. Employee donations were matched by Cooper Steel, for a total of \$11,580.



NASHVILLE & SHELBYVILLE COMMUNITY CENTERS

Cooper Steel team members in Nashville and Shelbyville volunteered at the Nashville Rescue Mission and Shelbyville Community Soup Kitchen during the Christmas season. At both locations, Cooper employees were honored to work alongside with the organizations' staff while preparing and serving warm meals to the citizens of these communities.



SAFETY SPOTLIGHT



HEATH MCELROY
VP, SAFETY

Safety remains Cooper Steel's top priority. As our business grows, we continue to meet the demands of our customers safely and efficiently. We look forward to continuing our pursuit of excellence with a quality safety team.

2023 SAFETY AWARDS



SAFETY COMMENDATION
Cooper Steel Fabrication Facility
SAFETY AWARD OF HONOR
Cooper Steel Field
SAFETY AWARD OF HONOR
Cooper Steel South



**SAFETY EXCELLENCE
PREMIER AWARD**

87

SAFETY AUDITS
PERFORMED YTD

Weekly audits are conducted on all Cooper Steel job sites, with findings and corrective actions implemented upon discovery.

87%

AVERAGE AUDIT SCORE
YEAR-TO-DATE





COOPER STEEL®

BUILD STRONG. STAND STRONG.

COOPER STEEL

SHELBYVILLE OFFICE & SHOP
503 N. Hillcrest Dr.
Shelbyville, TN 37160
(931) 684-7962

COOPER STEEL SOUTH, LLC

ALABAMA SHOP
809 First Rd.
Childersburg, AL 35044
(256) 346-9003

COOPER STEEL

NASHVILLE OFFICE
1005 17th Ave. S, Suite 300
Nashville, TN 37212
(615) 321-5222

COOPER STEEL OF VIRGINIA, LLC

VIRGINIA SHOP
275 Francis Ave.
Monroe, VA 24574
(434) 319-5600

COOPER STEEL

KENTUCKY OFFICE
500 Meijer Dr., Suite 100
Florence, KY 41042
(859) 980-0180